



**CUSHMAN®**

# MINUTE MISER™



## ALL WORK. ALL THE TIME.

With the Cushman® Minute Miser™, you won't waste a second of your day. This versatile, energy efficient vehicle features a flip-down seat for an additional passenger or a small cargo deck for moving equipment and materials. It's equipped with a zero-emissions, 24V electric drivetrain and has a load capacity of 550 pounds to move you around your facility in moments. Trust the Minute Miser to get you to the next job quickly and efficiently.

**LET'S WORK.®**

**550LB**  
TOTAL LOAD  
CAPACITY

**2**  
PERSON  
SEATING

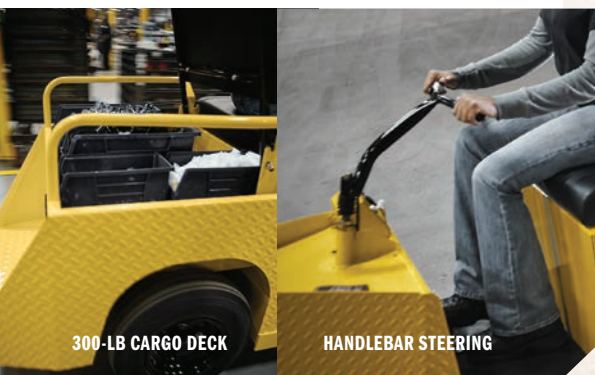
**24V**  
ELECTRIC  
DRIVETRAIN



# CUSHMAN<sup>®</sup> MINUTE MISER<sup>™</sup>



FLIP-DOWN SEAT



300-LB CARGO DECK

HANDLEBAR STEERING

## OPTIONS & ACCESSORIES

- Steering Wheel
- Foam Filled Tires
- Portable Charger
- Certification Module EE
- Hour Meter
- Headlight
- Horn
- CE Certification



COVERED WITH THE 2-YEAR CUSHMAN  
CARE TOTAL PROTECTION WARRANTY

### BODY & CHASSIS

FRAME	Welded Steel w/ DuraShield™ Powder Coat
BODY & FINISH	Diamond Plate Poly Primer and Acrylic
STANDARD COLOR	Safety Yellow

### DIMENSIONS

OVERALL LENGTH	85.0 in (216 cm)
OVERALL WIDTH	30.0 in (76 cm)
OVERALL HEIGHT	39.0 in (99 cm)
WHEEL BASE	48.0 in (122 cm)
WHEEL TRACK	N/A Front / 25.5 in (65 cm) Rear
GROUND CLEARANCE	4.0 in (10 cm)
CARGO DECK CAPACITY	300 lb (136 kg)
CARGO DECK MATERIAL	Plywood

### POWER

POWER SOURCE	24V DC Series Wound
HORSEPOWER (KW)	8.25 hp (6.15 kW) @ 1570 rpm
ELECTRICAL SYSTEM	24V DC
BATTERY (QTY/TYPE)	Four, 6V Deep Cycle
BATTERY CHARGER	24V DC, 100-240V AC On-Board, UL & CE
KEY OR PEDAL START	Pedal
SPEED CONTROLLER	Solid State 250 Amp Rated
DRIVE TRAIN	Motor Shaft Direct Drive
TRANSAXLE	Differential w/ Helical Gears
GEAR SELECTION	Forward-Neutral-Reverse
REAR AXLE RATIO	14.78:1

### PERFORMANCE

SEATING CAPACITY	2-Person
WEIGHT W/O BATTERIES	440 lb (200 kg)
CURB WEIGHT	690 lb (313 kg)
VEHICLE LOAD CAPACITY	550 lb (250 kg)
BED LOAD CAPACITY	300 lb (136 kg)
OUTSIDE CLEARANCE CIRCLE	10.8 ft (3.3 m)
SPEED	10 mph ± 0.5 mph (14 kph ± 0.8 kph)

### STEERING & SUSPENSION

STEERING	Direct Handlebar to Front Fork
SUSPENSION	Torque Block (Front) / Coil Springs & Single Shock Absorber (Rear)
SERVICE BRAKE	Rear Wheel Mechanical Drum
PARKING BRAKE	Single-Point Latch
TIRES (FRONT & REAR)	4.80 x 8 (Load Range B)

[www.cushman.com](http://www.cushman.com)

©2016 Textron Inc. All rights reserved. Features and specifications of the vehicles are subject to change without notice. Vehicle as photographed may include options not included on base model.

82326-G5 (Rev. 01/2016)