



LS |  LEXUS  
EXPERIENCE AMAZING

# DARE TO TAKE REFINEMENT FURTHER

---

The sixth-generation LS 500 range is a pinnacle of refinement. This provocative sedan is coupe-like in its silhouette, sloping elegantly at the rear of the car and drawing eyes in. With redesigned front fascias, headlights and tail lights, it's nearly impossible to look away. The interior was engineered to be a whisper-quiet haven, stopping excessive noise from interfering with the inside. When crafting this range of elegant machines, the inspiration behind every detail was the people who would experience the vehicles. Our *Takumi* craftsmen were inspired by you. They redesigned each element to fit your lifestyle seamlessly.

Introducing the reimagined LS. Available in LS 500, LS 500h and LS 500 F SPORT derivatives.



Model shown LS 500h.  
South African vehicle specifications may differ.

# REFINED DRIVING PERFORMANCE

## DRIVING PERFORMANCE FOR A MORE EMOTIONAL RESPONSE

---

From seamless acceleration to razor-sharp handling, the 2021 LS offers a more refined driving experience than ever before. When it came to crafting the LS, no detail was overlooked. With an enhanced Adaptive Variable Air Suspension system, a finely-tuned engine and advanced tyres that achieve optimum sound dampening within the cabin, each element of the LS was finessed to unlock a new level of refinement.

The performance of the LS has been elevated with a 3.5-litre twin-turbo V6 variant and a sustainably powered hybrid variant. All-wheel drive efficiently distributes the weight of the vehicle, helping to optimise traction, handling and control in a variety of driving conditions. The 2021 LS proves that only unconventional engineering can create unparalleled results.



UNRIVALLED COMMITMENT TO

---

HANDCRAFTED  
PERFECTION

THERE'S BEAUTY TO BE FOUND IN EVERY DETAIL

To reinvent the concept of a world-class premium sedan, our *Takumi* craftsmen rejected everything that came before and developed an entirely new process for this range. Going to great lengths to create the most advanced LS ever, we made sure that there is beauty found and experienced in every single detail.



EXTERIOR DESIGN



Model shown LS 500h.  
South African vehicle specifications may differ.

PUSHING PERFECTION

# FURTHER

---

A design that demands attention, the spindle grille catches the eye, but the three-dimensional front-end draws it further, making it dynamic even when stationary. Inspired by traditional Japanese etching, more than 5 000 individual surfaces, all arranged by hand, and 5 000 individual facets, each precisely calibrated to catch and reflect light. Eight hours a day. Over six months. The design process behind the grille of the LS would be considered extravagant if the results were anything less than visionary.



# ART THAT MOVES YOU

The design philosophy behind our most evocative LS yet is attention to detail that inspires an emotional response. The coupe-like profile, redesigned headlights and tail lights and a more daring front fascia make you, the driver, feel more courageous and confident behind the wheel. The unique artistic expression of the vehicle makes it as original as you are. With a more distinctive design and unconventional craftsmanship, the 2021 LS doesn't just set the standard, it exceeds it.



Model shown LS 500 F SPORT.  
South African vehicle specifications may differ.

# INSPIRED BY LUXURIOUS **COMFORT**

## A **ALLOY WHEELS**

The LS 500 comes fitted with run-flat tyres on bespoke 20-inch cast alloy rims. These wheels were meticulously crafted to achieve optimum sound dampening so that unwanted external noise wouldn't be heard inside the car.

## B **MOONROOF**

The expansive moonroof with its unique outer-sliding design provides more open space in the cabin. It was crafted to break boundaries, offering a wider view than traditional moonroofs.

## C **SPINDLE GRILLE**

The iconic LS spindle grille has been updated to exhibit dark metallic shadows, making the car look more daring and dynamic. Crafted like a sculpture, the shape of the chrome-plated frame draws eyes in.

## D **AUTO-RETRACTABLE HEATED SIDE MIRRORS**

The auto-retractable, electrochromic side mirrors come with heating functionality, eliminating frost and mist in winter, offering improved visibility and safety.





# DISCOVER THE ART OF HOSPITALITY

The Lexus LS perfectly embodies *Omotenashi*, which is the Japanese concept of hospitality. The interior has been artfully crafted to stimulate a deeper connection by illuminating unwanted noise so that conversations and music can be enjoyed without interruption. Even the seat cushions were designed to reduce vibration to provide ultimate comfort. You can also customise the interior of your LS according to your unique taste. Coordinate the style of your seats, instrument panel, ceiling and carpets to be a true expression of your personality and lifestyle. This is just another way that we make you feel right at home wherever you go.

# INSPIRED BY LUXURIOUS COMFORT

## A IMPROVED NAVIGATION CONTROLS

A wide, 12.3-inch EMV (Electro Multi-Vision) display has been adopted, offering enhanced usability and readability. The navigation screen has also been moved rearwards. This new position ensures direct touch screen operation without any obstructions.

## B LEATHER STEERING WHEEL

The genuine leather, 3-spoke steering wheel has paddle shifters and a touch sensor that detects the driver's grip on the wheel for increased safety.

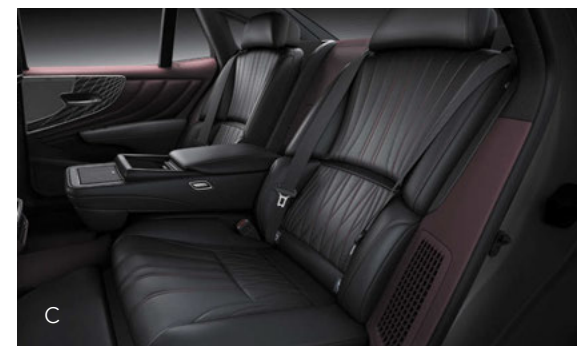
## C MORE ADAPTIVE SEATS

The 28-way seat adjustment mechanism creates a sense of unity with the vehicle by allowing fine adjustments. The heated seats also offer lumbar support and specific models also provide a front and rear seat massage\*.

## D EFFECTIVE AIR CONDITIONING

The auto four-zone\* air conditioner with Lexus Climate Concierge can be controlled with a single switch to provide a pleasant temperature in the interior space.

\*Available on LS 500 and LS 500h models only.





A high-angle, black and white photograph of the rear passenger compartment of a luxury vehicle. The image shows two leather-upholstered seats with vertical stitching on the backrests and horizontal stitching on the seat cushions. A central console with a handbrake and storage compartments is positioned between the seats. The door panel on the right features a mesh speaker grille and a door handle. The overall design is sleek and modern, emphasizing comfort and elegance.

INTERIOR DESIGN

Model shown LS 500.  
South African vehicle specifications may differ.



---

# SAFETY WITHOUT COMPROMISE

---

The 2021 Lexus LS has been engineered to bring the world closer to a future without accidents. Presenting the Lexus Safety System+ 2.0 - a comprehensive suite of world-class safety equipment that has been honed and tested on one of the most complex highway systems in the world, the Tokyo Metropolitan Expressway. If the Lexus Safety System can protect drivers and passengers on those menacing roads, it can protect you, your family and your friends wherever you go.



Model shown LS 500h.  
South African vehicle specifications may differ.

# INSPIRED BY LUXURIOUS **COMFORT**

## A **ALL-SPEED ADAPTIVE CRUISE CONTROL**

Our cruise control technology now helps to detect an upcoming curve and can lower your speed accordingly. It also helps you maintain a pre-set speed and following distance from the vehicle ahead. Whether at highway speeds or in stop-and-go traffic, the system is designed to detect if you get closer than the pre-set distance and can automatically slow your vehicle – even to a complete stop.

## B **PRE-CRASH SYSTEM**

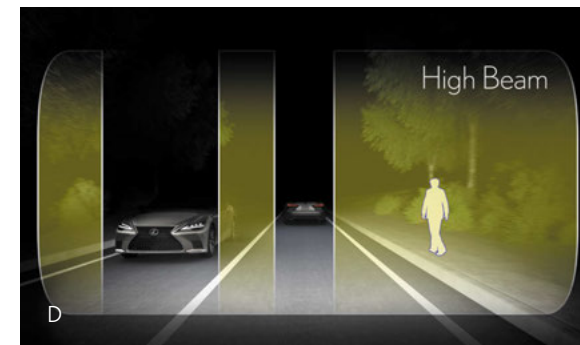
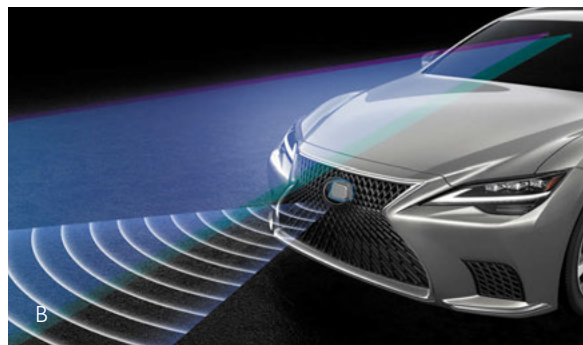
With enhanced radar and camera capabilities, this system now features intersection support for increased safety for pedestrians and vehicles. It can also help to detect the vehicle ahead, a preceding bicyclist in daytime, and a preceding pedestrian in both daytime and low-light conditions. Should the system detect a potential frontal collision, it can help provide steering assistance and automatically brake the vehicle to a stop.

## C **LANE TRACE ASSIST**

Lane Trace Assist with steering vibration helps the driver keep their vehicle centred in the lane, it can even provide steering assistance. Designed for added convenience and to help reduce driver strain, the system can also be used in traffic and on highways with gradual curves.

## D **BLADESCAN™ ADAPTIVE HIGH-BEAM SYSTEM**

The new BladeScan™ Adaptive High-Beam System has a slim three-projector lamp unit and distinct L-shaped daytime running lights. At night, the system offers excellent visibility because it provides a wider illumination area, delivering and distributing smooth and fine light. This contributes to an outstanding field of view for the driver as well as improved pedestrian recognition.





# GREATER INNOVATION FOR A GREATER CONNECTION

At Lexus, our approach to technology isn't limited to driving; it's the art of providing a connection between the driver and their car through innovative designs. Inspired by Omotenashi, the Japanese concept of hospitality, our vision is to make the driver and guests feel cared for from the moment they step into the vehicle. It means anticipating their needs and attending to their comfort through forward-thinking technology, forming a relationship that is seamless and intuitive. With a convenient 12.3-inch touchscreen, world-class audio technology and a multitude of connectivity options, the LS isn't only the most advance it's ever been, it is also the most human-centred sedan that we've created.



Model shown LS 500h.  
South African vehicle specifications may differ.



# INSPIRED BY LUXURIOUS COMFORT

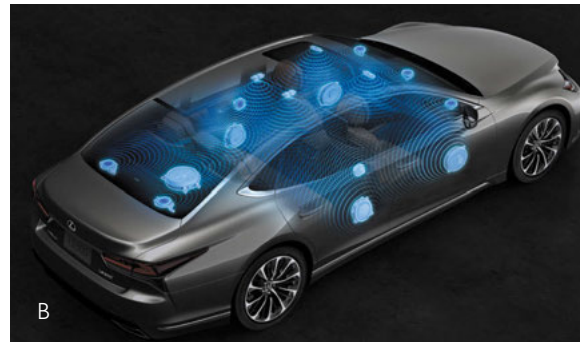
## A POWER LUGGAGE BOOT

The power, hands-free luggage boot makes it easy to load items into the car. The boot can be opened and closed moving one's foot in front of a kick sensor located underneath the rear bumper while carrying the smart key.



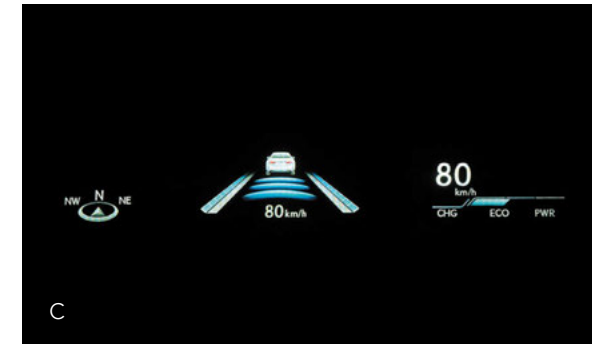
## B AUDIO SYSTEM

The 17MM+ multimedia system offers ultimate connectivity using USB audio, Apple CarPlay and Android Auto. The Mark Levinson® Surround Sound system includes 23 speakers and provides a concert hall-like listening experience within the cabin.



## C HEAD-UP DISPLAY

The 2021 LS provides the largest-in-class Head-Up Display available. The high-resolution full-colour display communicates information clearly and effectively. Images are projected three metres in front of the driver, making it easier to focus.



## D PARK DISTANCE CONTROL

The Park Distance Control detects objects around the Lexus LS and alerts the driver with a display indicator or a buzzer to prompt immediate action. It's combined with the cutting-edge Clearance Sonar Indicator, which intuitively displays the exact position of an object in relation to the car for optimum perceptiveness.



# INSPIRED BY LUXURIOUS COMFORT

## A MYLEXUS APP

Experience greater connectivity with your Lexus LS by using the MyLexus App. When drivers use the app, they open up a whole new world of personalised offerings and customisable features, which include Wi-Fi, Roadside Assistance and more. See the back of the brochure for more information.

## B REAR-SEAT ENTERTAINMENT

An 11.6-inch LCD screen with 720p definition has been made available so that backseat passengers can enjoy an advanced viewing experience. In addition to Blu-ray Disc and SD card playback, Wi-Fi functionality has been added for more viewing options.

## C DRIVE MODE SELECT

Drive Mode Select allows you to match the adaptable performance characteristics of your vehicle to your situation or even mood. With six selectable drive modes, (Eco, Normal, Sport, Sport S+, Comfort, and Custom) the engine responsiveness, gear-change characteristics, steering and even the suspension are all tuned for economy, performance or comfort.

## D REMOTE TOUCH PAD

In the 2021 LS, a newly developed frameless touchpad surface has been adopted. It is silky smooth and easy to use even while driving. Access the map, turn up the heat or call a contact safely and efficiently.



A



C



B



D

# TRANSCENDING THE STANDARDS OF HYBRID TECHNOLOGY

The total system output from the 3.5-litre V6 petrol engine and the lightweight lithium-ion battery is 264kW and torque is rated at 350Nm. A Continuously Variable Transmission (CVT) maximises both efficiency and performance. The Lexus Multistage Hybrid Drive system delivers even more seamless acceleration without requiring charging. Finally, an eco-conscious car that is both powerful and luxurious.





# INSPIRED BY LUXURIOUS **COMFORT**

## A **SELF-CHARGING HYBRID SYSTEM**

Lexus Hybrids are self-charging powerhouses that get your pulse racing. By integrating two sources of energy, these cars exhibit incredible performance, responsiveness and efficiency. Enjoy an exhilarating total output of 264kW without ever having to plug in your hybrid.

## B **QUIETNESS**

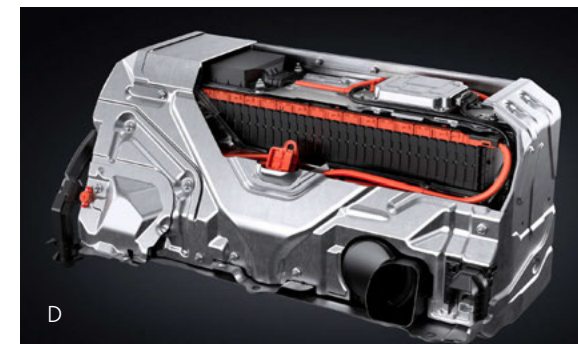
The sixth-generation LS was already crafted to be whisper-quiet but with the addition of our silent hybrid engine, the luxury sedan becomes a sanctuary of peace despite the noise of the outside world. In this one-of-a-kind, eco-conscious vehicle, you'll experience fewer interruptions and lower carbon emissions.

## C **ECO-FRIENDLY**

Our self-charging hybrid systems are eco-friendly and produce zero emissions when in Electric Mode.

## D **BATTERY WARRANTY**

Lexus Hybrids have long-lasting batteries with an 8-year/195 000km Warranty. The compact battery, on average, lasts longer than the Warranty. In fact, it has been designed to last as long as the vehicle.



# F SPORT

---

## FOR A THRILLING DRIVING EXPERIENCE

The razor-sharp handling of the Lexus high-performance line meets aggressive, track-inspired design with the LS 500 F SPORT. All LS 500 F SPORT models share a platform with the intense LC coupe and share DNA with the LFA, including a specially tuned suspension system engineered by the same team behind the iconic supercar.

Featuring LFA-inspired gauges, sport seats with enhanced bolsters, larger brakes, aluminium pedals and our most advanced vehicle dynamic control system yet, the LS 500 F SPORT is the most engaging LS driving experience ever.



Model shown LS 500 F SPORT.  
South African vehicle specifications may differ.

**A F SPORT BADGE**

Although discreet, the F SPORT logo is a badge of distinction. The “F” refers to the birthplace and primary testing site of our high-performance F SPORT vehicles: Fuji Speedway, located near Mount Fuji.

**B F SPORT GRILLE**

The bold F SPORT grille was created to get your heart racing. With jet-black, chrome-plated mouldings and large side grilles that make the vehicle look as if it has a lower centre of gravity, this sporty sedan turns heads wherever you drive it.

**C SPORT SEATS**

The athletic smooth leather seats are exclusively F SPORT, designed to gently support your body, giving you reassuring stability and comfort during even the sportiest driving manoeuvres.



**D F SPORT STEERING WHEEL**

Featuring the F SPORT logo, you'll sense a special kind of connectedness every time you take this wheel in your hands. Finished in 3-spoke leather, the F SPORT gearshift design matches the steering wheel to create an exciting sports ambience.

**E SPORT PEDALS**

Offering excellent grip characteristics, aluminium pedals reflect the motorsport design heritage of the F SPORT model.

**F F SPORT INSTRUMENTS**

Using innovative Thin Film Transistor (TFT) technology and a moving centre ring design, the displayed content has been reinvented. When operating the multimedia system, the metre ring slides to one side to reveal the menu. This allows a dual display using a single metre. The metre has a newly designed graphic giving a luxurious sense of depth, expressing the ambience of a Lexus flagship model.



Model shown LS 500 F SPORT.  
South African vehicle specifications may differ.

Engine and Drivetrain	Lexus LS 500 (Dark Wood)	Lexus LS 500 F SPORT	Lexus LS 500 Hybrid
Adaptive Variable Suspension (AVS)	•	•	•
Bore x Stroke (mm)	85.5 x 100	85.5 x 100	94.0 x 83.0
Driven Wheels	RWD	RWD	RWD
Fuel System	Petrol-EFI+D-4ST	Petrol-EFI+D-4ST	Petrol Hybrid-EFI+D-4S
Maximum Power (kW @ r/min)	310@6000	310@6000	220@6600
Maximum Torque (Nm @ r/min)	600@1600-4800	600@1600-4800	350@5100
Number of Cylinders and Arrangement	V-Type-6	V-Type-6	V-Type-6
Starting System	Push Start	Push Start	Push Start
Suspension (Rear)	Multilink	Multilink	Multilink
Total System Output (kW)			264
Transmission	Automatic – 10-speed	Automatic – 10-speed	CVT
Turbo Charger	•	•	
Suspension (Front)	High Mount Multilink	High Mount Multilink	High Mount Multilink
Engine Capacity (Litre)	3.5	3.5	3.5
Exterior Features			
Daytime Running Light	LED	LED	LED
Door Outside Handles	Chrome – Smart Entry	Chrome – Smart Entry	Chrome – Smart Entry
Front Bumper	Colour Coded	Colour Coded	Colour Coded
Front Fog Lamps	•	•	•
Headlights	LED – BladeScan™ Adaptive High-Beam System (AHS)	LED – BladeScan™ Adaptive High-Beam System (AHS)	LED – BladeScan™ Adaptive High-Beam System (AHS)
Headlamps Cleaner	•	•	•
Headlamp Levelling	Automatic	Automatic	Automatic
Light Control System	Autocut	Autocut	Autocut
Luggage Boot/Rear Door	Power and Hands Free	Power and Hands Free	Power and Hands Free
Side Mirrors	Colour Coded, Auto-Retractable, Electrochromatic, Heated	Colour Coded, Auto-Retractable, Electrochromatic, Heated	Colour Coded, Auto-Retractable, Electrochromatic, Heated
Front Grille	Black	F SPORT	Black
Rear Bumper	Colour Coded	Colour Coded	Colour Coded
Rear Lights	LED	LED	LED
Rear Fog Lamp	•	•	•
Front Window Wiper	Intermittent, Rain-sensing, Auto	Rain-sensing, Auto, Intermittent	Rain-sensing, Auto, Intermittent
Cornering Lamp	•	•	•
Interior Features			
Package Trim and Tonneau Cover	•	•	•
Cool Box	•		
Cupholders	4	4	•
Floor Carpet Trim	Carpet	Carpet	Carpet
Front Headrest	Power, Butterfly, Active	Power	Power, Butterfly, Active
Instrument Panel Trim	Synthetic Leather	Synthetic Leather	Synthetic Leather
Rear-View Mirror	Electrochromatic (EC)	Electrochromatic (EC)	Electrochromatic (EC)
Key Reminder Warning	•	•	•
Overhead Console	•	•	•
Seat Trim	Semi-Aniline Leather	Smooth Leather	Semi-Aniline Leather
Shift Lever and Knob	Leather	F SPORT	Leather
Speedometer	Optitron	Optitron	Optitron
Steering Wheel	3 Spoke/Leather+Wood	3 Spoke/F SPORT	3 Spoke/Leather+Wood
Front Personal Lamp	LED	LED	LED
Safety			
Airbag On-Off Switch	•	•	•
Anti-Theft System	Siren/Tilt Sensor, Intrusion Sensor	Siren/Tilt Sensor, Intrusion Sensor	Siren/Tilt Sensor, Intrusion Sensor
Auto Door Lock	Speed Dependent	Speed Dependent	Speed Dependent
Child Lock	•	•	•
Child Restraint System (ISOFIX)	2	2	2
Emergency Brake Signal	•	•	•
Parking Brake	Electric	Electric	Electric



Safety	Lexus LS 500 (Dark Wood)	Lexus LS 500 F SPORT	Lexus LS 500 Hybrid
Front Brake	Ventilated Disc	Ventilated Disc	Ventilated Disc
Front Seat Belts	ELR, Pretensioner, Force Limiter, Tension Reducer	ELR, Pretensioner, Force Limiter, Tension Reducer	ELR, Pretensioner, Force Limiter, Tension Reducer
Over-Run and Speed Limiter	250	250	250
Power Door Lock	•	•	•
Pre-Crash System (Brake Synchronised)	•	•	•
Rear Brake	Ventilated Disc	Ventilated Disc	Ventilated Disc
Rear Seat Belts	Tension Reducer, Force Limiter, Pretensioner	Tension Reducer, Force Limiter, Pretensioner	Pretensioner, Tension Reducer, Force Limiter
Seat Belt Warning	Front + Rear/RR1: Light, P: Buzzer, P: Light, D: Buzzer, D: Light	Front + Rear/RR1: Light, P: Buzzer, P: Light, D: Buzzer, D: Light	Front + Rear/D: Light, RR1: Light, P: Buzzer, P: Light, D: Buzzer
Wireless Door Lock	Smart Entry	Smart Entry	Smart Entry
Airbags	Passenger Knee, Rear Cushion, Rear Side, Front Side, Driver Knee, Passenger, Driver, Curtain	Passenger Knee, Rear Side, Front Side, Driver Knee, Passenger, Driver, Curtain	Passenger, Passenger Knee, Rear Cushion, Rear Side, Front Side, Driver, Curtain, Driver Knee
<b>Driver Support Systems</b>			
Tyre Pressure Monitor	•	•	•
Park Distance Control	Front + Rear, Intelligent Clearance Sonar	Intelligent Clearance Sonar, Front + Rear	Intelligent Clearance Sonar, Front + Rear
Anti-Lock Braking System (ABS)	•	•	•
Blind Spot Monitor (BSM)	With Rear Cross Traffic Alert	With Rear Cross Traffic Alert	With Rear Cross Traffic Alert
Brake Assist (BA)	•	•	•
Electronic Brake Force Distribution (EBD)	•	•	•
Hill Assist Control (HAC)	•	•	•
Traction Control (TRC)	•	•	•
Vehicle Dynamic Integrated Management (VDIM)	•	•	•
Vehicle Stability Control (VSC)	•	•	•
Drive Mode Select	Eco, Custom, Comfort, Sport S+, Sport, Normal	Custom, Comfort, Sport S+, Sport, Normal, Eco	Custom, Comfort, Sport S+, Sport, Normal, Eco
Lane Keeping System	Steering Vibration, Lane Trace Assist	Lane Trace Assist, Steering Vibration	Lane Trace Assist, Steering Vibration
<b>Performance</b>			
Acceleration 0-100 (sec)	5.0	5.0	5.4
Top Speed (km/h)	250	250	250
Fuel Consumption (Combined Cycle) (L/100km)	10.0	10.0	6.6
CO <sub>2</sub> (g/km)	277	277	150
<b>Service and Warranty</b>			
Service Interval	12 Months/15 000km	12 Months/15 000km	12 Months/15 000km
Warranty	7 Years/105 000km	7 Years/105 000km	7 Years/105 000km
Maintenance Plan	7 Years/105 000km	7 Years/105 000km	7 Years/105 000km
<b>Wheels and Tyres</b>			
Wheel and Tyre	F: 245-45RF20 Alloy / R: 245-45RF20 Alloy	F: 245-45RF20 Alloy / R: 275-40RF20 Alloy	F: 245-45RF20 Alloy / R: 245-45RF20 Alloy
<b>Styling</b>			
Roof	Moonroof	Moonroof	Moonroof
<b>Convenience</b>			
Cruise Control	All Speed, Adaptive	Adaptive, All Speed	All Speed, Adaptive
Air Conditioner	Auto 4-Zone	Auto Dual-Zone	Auto 4-Zone
Audio System	Mark Levinson®/EMV	Mark Levinson®/EMV	Mark Levinson®/EMV
Bluetooth	•	•	•
Disc Type	DVD	DVD	DVD
Head-Up Display (HUD)	•	•	•
Multi-Information Display	TFT	TFT	TFT
Navigation System	EMV	EMV	EMV
Power Socket	Front – 12V x2, Rear – 12V	Rear – 12V, Front – 12V x2	Front – 12V x2, Rear – 12V
Power Steering	Electric (EPS)	Electric (EPS)/Variable Gear Ratio Steering (VGRS)	Electric (EPS)
Electric Windows	All/All One Touch	All/All One Touch	All/All One Touch
Rear Armrest	•	•	•
Seat Heater	Front and Rear	Front and Rear	Front and Rear
Seat Lumbar Support	Pelvic, Driver 4-way, Rear 4-way, Passenger 4-way	Driver 4-way, Pelvic - Passenger 4-way	Pelvic, Driver 4-way, Rear 4-way, Passenger 4-way
Seat Ventilation	Front and Rear	Front Only	Front and Rear
Speakers	23	23	23
Steering Column Adjustments	Power/Tilt & Telescopic, Memory	Power/Tilt & Telescopic, Memory	Power/Tilt & Telescopic, Memory

Convenience	Lexus LS 500 (Dark Wood)	Lexus LS 500 F SPORT	Lexus LS 500 Hybrid
Steering Switches	Audio, Telephone, Info Display, Voice Command, Adaptive Cruise Control, Lane Trace Assist	Audio, Telephone, Info Display, Voice Command, Adaptive Cruise Control, Lane Trace Assist	Audio, Telephone, Info Display, Voice Command, Adaptive Cruise Control, Lane Trace Assist
Sun Visor	•	•	•
USB	•	•	•
Seat Massage Function	Vibration/Front and Rear		Vibration/Front and Rear
Rear-Seat Entertainment (RSE) System	•		•
Rear Sunshade	•	•	•
Android Auto and Apple CarPlay	•	•	•
Lexus Connect Enabled	•	•	•
Dimensions and Capacities			
Front Overhang (mm)	940	940	940
Front Tread (mm)	1631	1631	1631
Gross Combination Mass (GCM)	2670	2670	2725
Gross Vehicle Mass (GVM)	2670	2670	2725
Height (mm)	1450	1450	1450
Length (mm)	5235	5235	5235
Luggage Capacity (L)	440	480	400
Rear Overhang (mm)	1170	1170	1170
Rear Tread (mm)	1637	1617	1637
Turning Circle (Tyres, m)	5.7	5.6	5.7
Wheelbase (mm)	3125	3125	3125
Width (mm)	1900	1900	1900

# EXTERIOR COLOURS

---



**083 WHITE NOVA**  
AVAILABLE ON  
LS 500 F SPORT\* MODEL  
ONLY



**085 WHITE QUARTZ**  
AVAILABLE ON  
LS 500 | LS 500h\*



**1J7 SONIC TITANIUM**  
AVAILABLE ON  
LS 500\* | LS 500 F SPORT\* |  
LS 500h\*



**1K2 MANGANESE LUSTER**  
AVAILABLE ON  
LS 500 | LS 500 F SPORT |  
LS 500h\*



**1L2 SONIC IRIDIUM**  
AVAILABLE ON  
LS 500\* | LS 500 F SPORT\* |  
LS 500h\*



**1L3 LUSTROUS SILVER**  
AVAILABLE ON  
LS 500\* | LS 500 F SPORT\* |  
LS 500h\*



**212 BLACK**  
AVAILABLE ON  
LS 500\* | LS 500 F SPORT\* |  
LS 500h\*



**223 GRAPHITE BLACK**  
AVAILABLE ON  
LS 500\* | LS 500 F SPORT\* |  
LS 500h\*



**3R1 MORELLO RED**  
AVAILABLE ON  
LS 500\* | LS 500 F SPORT\* |  
LS 500h\*



**3U3 SONIC AGATE**  
AVAILABLE ON  
LS 500\* | LS 500 F SPORT\* |  
LS 500h\*



**8X1 POSEIDON BLUE**  
AVAILABLE ON  
LS 500 F SPORT ONLY



**8X5 OPULENT BLUE**  
LS 500\* | LS 500 F SPORT\* |  
LS 500h\*

# INTERIOR TRIM COLOURS

---



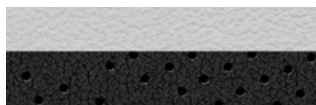
**BLACK**  
AVAILABLE ON  
LS 500 | LS 500h



**CRIMSON AND BLACK**  
AVAILABLE ON  
LS 500 | LS 500h



**BLACK AND WHITE**  
AVAILABLE ON  
LS 500 F SPORT ONLY



**WHITE**  
AVAILABLE ON  
LS 500 F SPORT ONLY



**FLARE RED**  
AVAILABLE ON  
LS 500 F SPORT ONLY

\*Customer order only.



# EXPERIENCE ULTIMATE CONNECTIVITY WITH **MYLEXUS**

---

All Lexus vehicles can now be connected to the MyLexus App on your mobile phone, giving you more control of your driving experience and opening up a whole new world of personalised offerings and customisable features so that you can:



## **IN-CAR Wi-Fi\***

Connect to Wi-Fi



## **GPS LOCATOR**

Always know your vehicle's GPS location



## **LOGBOOK**

Have access to a digital logbook



## **DRIVER NOTIFICATIONS**

Important reminders like licence renewal



## **BATTERY HEALTH CHECK**

Check your battery health



## **SERVICE BOOKING**

Manage your services



## **ROADSIDE ASSISTANCE**

Get real-time roadside assistance



## **DRIVER RATING**

Receive a driver rating



## **FLEET MANAGEMENT**

Monitor your fleet



## **LICENCE RENEWAL**

Car licence renewal available

## **AND MORE**

The above features are not all; there are loads of other features available to further enhance driver and guest safety, convenience and comfort, and plenty more to come to make your driving experience better and better with every kilometre.



**DOWNLOAD THE MYLEXUS APP  
AND GET CONNECTED TODAY**

**FIND OUT MORE AT [LEXUS.CO.ZA/MYLEXUS](https://lexus.co.za/mylexus)**

\*15GB Free data once-off upon activation. Ts&Cs apply. Available in South Africa only.



# LEXUS MAINTENANCE

---

## INTRODUCTION

At Lexus, we take pride in the advanced engineering and craftsmanship of the vehicles we build. For that reason, our Warranty and Distance Plans are designed to provide Lexus owners with seamless vehicle maintenance and complete peace of mind. The Lexus Warranty and Distance Plans both enjoy full support by Lexus SA and offer customers access to specialised servicing, maintenance and repair at any Lexus dealer in South Africa, Namibia and Botswana.

## WARRANTY AND DISTANCE PLANS

To complement its comprehensive Warranty, the LS features a Distance Plan Complete that provides for service and maintenance costs. The option to extend the period of cover is available for both the Warranty and Distance Plan Complete. These options can be discussed with your Lexus dealer. To familiarise yourself with the cover provided by Warranty and Distance Plan on the LS, please consider the information below.

### WARRANTY

- Duration: 7 Years or 105 000km from original date of sale.
- Cover: Repair or replacement of components that fail or malfunction as a result of manufacturing or material defect.

### DISTANCE PLAN

For the Lexus LS, all Distance Plans have been improved. All Lexus LS models are covered by a Distance Plan Complete full Maintenance Plan for 7 Years/105 000km as well as a comprehensive manufacturer's Warranty, the LS 500h has a Hybrid Battery Warranty of 8 Years/195 000km.

Consult with your Lexus dealer for more information on the terms and conditions of the Warranty and Distance Plan Complete offered on the LS.

## LEXUS LIFE

Our online magazine, Lexus Life celebrates innovative design, sustainable technologies and premium experiences around the globe.

Download the app from Google Play or the App Store.

Keep up to date with all things Lexus here:

[www.lexus.co.za/lexus-life](http://www.lexus.co.za/lexus-life)



---

Certain vehicle details and specifications contained in this brochure may differ from available models. Toyota Motor Corporation of Japan and Toyota SA (Pty) Ltd. make no warranties, either expressed or implied, concerning the verisimilitude of contained material. Toyota reserves the right to alter any details of specifications and equipment without notice. Waste Tyre Registration Number: TPREG0031GAU.

© 2015 Lexus South Africa\* reserves the right to alter any details of specifications and equipment without notice. Details of specifications and equipment are also subject to change to suit local conditions and requirements. Please enquire at your local Lexus Authorised Dealer of any such changes that might be required for your area.



Find Lexus South Africa on:  Lexus South Africa  @Lexus\_SA  lexus\_southafrica  
For a detailed list of specifications please visit [www.lexus.co.za](http://www.lexus.co.za)

PMN05X0011 Date 2021/08